

# LEANNE HULL FINE ART, LLC

LEANNE HULL MACDOUGALL

TEL: (619)889-8317

[www.leannehull.com](http://www.leannehull.com)

[art@leannehull.com](mailto:art@leannehull.com)

## **Sol Lewitt**

(Blue Border) from

“Isometric Figures in Five and Six Colors Series,” 2002

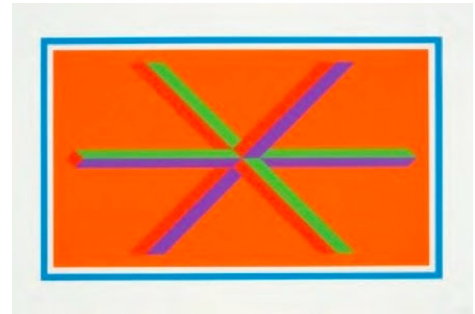
Linocut

Signed and numbered 31/55

15 in. x 27  $\frac{7}{8}$  in. (image size)

19  $\frac{3}{4}$  in. x 29  $\frac{3}{4}$  in. (paper size)

25 in. x 35 in. (framed)



## **Sol Lewitt**

(Purple Border) from

“Isometric Figures in Five and Six Colors Series,” 2002

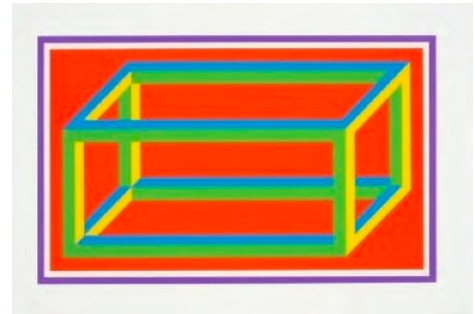
Linocut

Signed and numbered 31/55

15 in. x 27  $\frac{7}{8}$  in. (image size)

19  $\frac{3}{4}$  in. x 29  $\frac{3}{4}$  in. (paper size)

25 in. x 35 in. (framed)



## **Waybe Thiebaud**

“Untitled (seated nude, male),” 1977

Unique monotype

27  $\frac{1}{2}$  in. x 17  $\frac{1}{2}$  in. (paper size)

34 in. x 25 in. (framed size)



# LEANNE HULL FINE ART, LLC

LEANNE HULL MACDOUGALL

TEL: (619)889-8317

[www.leannehull.com](http://www.leannehull.com)

[art@leannehull.com](mailto:art@leannehull.com)

## Wayne Thiebaud

“Large Sucker,” 1971

Lithograph in 4 colors

Ed. 19/50, from portfolio

“Seven Still Lives and a Rabbit”

24 in. x 22 in. (paper size)

31 in. 28 ½ in. (framed)



## Ed Ruscha

“I’m Amazed,” 1971

Silkscreen

Ed. 50/100

37 ⅞ in. x 59 ¾ in. (paper size)

45 in. x 65 in. (framed size)



## Sol Lewitt

(Green Border) from

“Isometric Figures in Five and Six Colors Series,” 2002

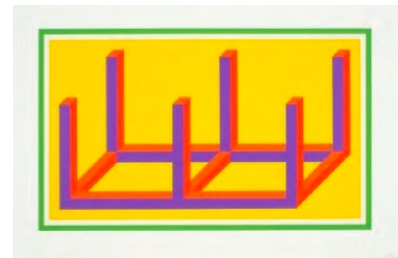
Linocut

Signed and numbered 31/55

15 in. x 27 ⅞ in. (image size)

19 ¾ in. x 29 ¾ in. (paper size)

25 in. x 35 in. (framed)



## Jasper Johns

“Untitled (American Center, Paris),” 1994

Color lithograph, Ed. 56/75

36 in. x 30 in. (paper size)

40 in. x 34 in. (framed)



# LEANNE HULL FINE ART, LLC

LEANNE HULL MACDOUGALL

TEL: (619)889-8317

[www.leannehull.com](http://www.leannehull.com)

[art@leannehull.com](mailto:art@leannehull.com)

## **Sol Lewitt**

(Orange Border) from

“Isometric Figures in Five and Six Colors Series,” 2002

Linocut

Signed and numbered 31/55

15 in. x 27  $\frac{7}{8}$  in. (image size)

19  $\frac{3}{4}$  in. x 29  $\frac{3}{4}$  in. (paper size)

25 in. x 35 in. (framed)



## **Sol Lewitt**

(Yellow Border) from

“Isometric Figures in Five and Six Colors Series,” 2002

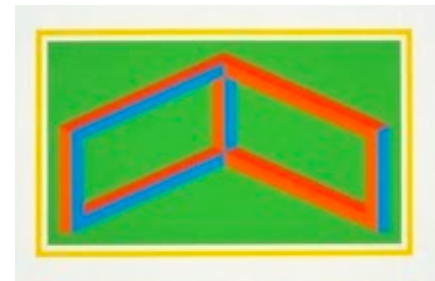
Linocut

Signed and numbered 31/55

15 in. x 27  $\frac{7}{8}$  in. (image size)

19  $\frac{3}{4}$  in. x 29  $\frac{3}{4}$  in. (paper size)

25 in. x 35 in. (framed)



## **Sam Francis**

“Untitled (SFE -046),” 1988

Etching and aquatint

Ed. 20, APII

45  $\frac{3}{4}$  in. x 31  $\frac{1}{2}$  in. (paper size)

49 in. x 35 in. (framed size)

